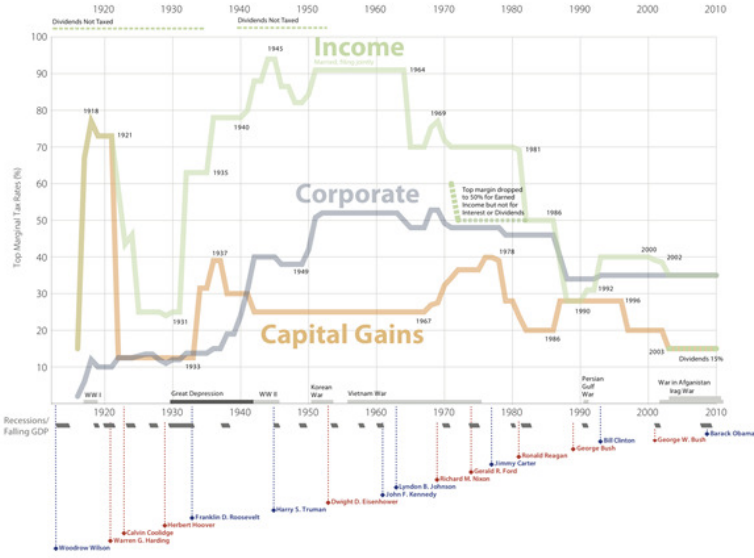


# Top Marginal Tax Rates: 1916-2010

Personal Income, Capital Gains and Corporate Tax Rates

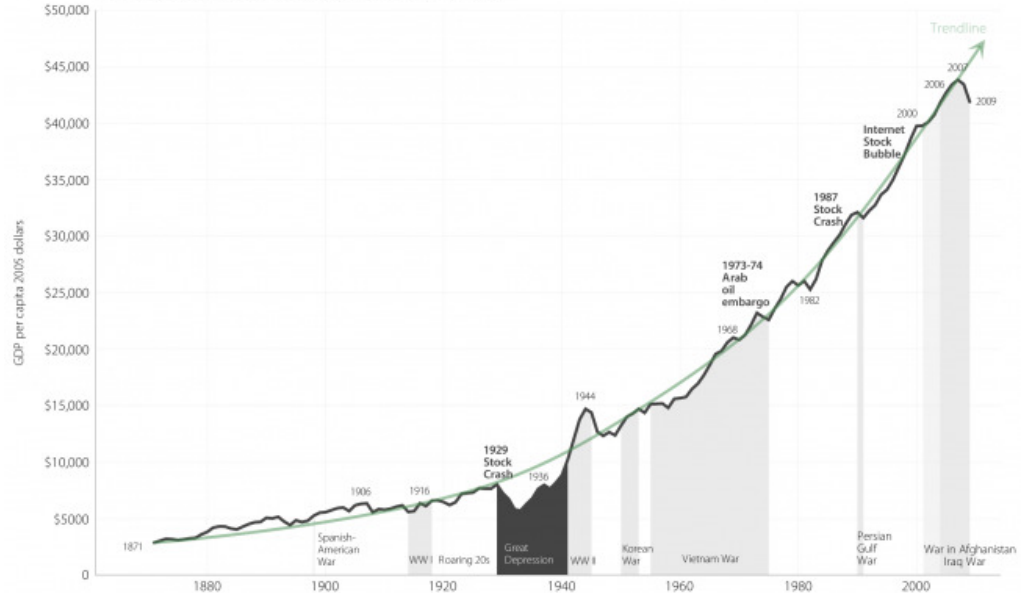


Tax Data Tables: TaxPolicyCenter.org, TruthandPolitics.org and Citizens for Tax Justice (ctj.org)

VisualizingEconomics.com

# Long-term real growth in US GDP per capita 1871-2009

GDP per capita adjusted for inflation using 2005 dollars

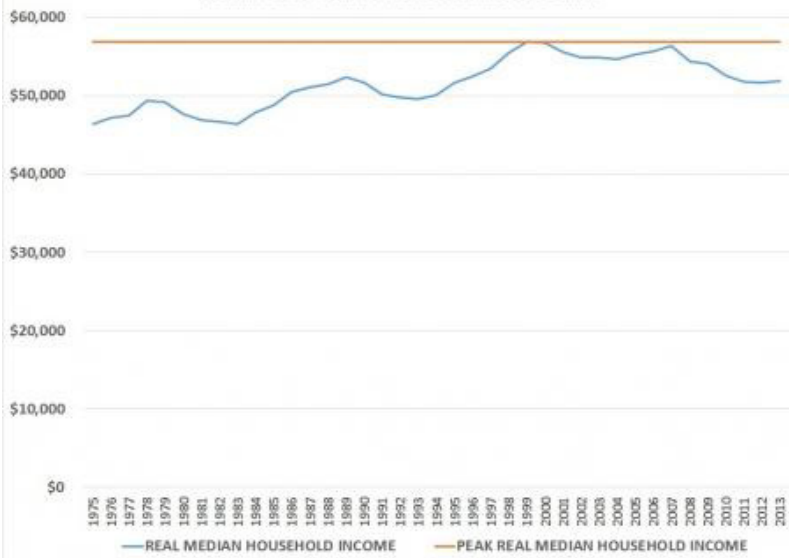


Data from MeasuringWorth.com

VisualizingEconomics.com

# REAL MEDIAN HOUSEHOLD INCOME PEAKED IN 1999

Median Household Income in Constant 2013 Dollars



# United States - Unemployment Rate (1890 - 2011)

